

XVII UISPP Congress

Burgos (Spain), 2014

Organization: Atapuerca Foundation



Congress organization:

Congress Direction:

Dres. Juan Luis Arsuaga, José María Bermúdez de Castro and Eudald Carbonell.

Honor Presidency:

The Atapuerca Foundation will require to Her Majesty Queen Sofia to accept the Honor Presidency of this Congress.

Organizer Entity:

Atapuerca Foundation.

Congress Organizer Office:

The Atapuerca Foundation will create an Organizer Office for XVII UISPP Congress endowed with material and human medias needed to attend professionally the organization of this Congress. The *Organizer Office* will depend directly from the Secretary of the Atapuerca Foundation.



The Atapuerca Foundation's Partners Entities for the XVII UISPP Congress

- Centro Mixto Universidad Complutense de Madrid-Instituto de Salud Carlos III de Evolución y Comportamiento Humano.
www.atapuerca.tv
- Centro Nacional de Investigación sobre la Evolución Humana.
www.cenieh.es
- Instituto Catalán de Paleoecología Humana y Evolución Social.
www.iphes.cat
- Fundación Duques de Soria.
www.fds.es
- Universidad de Burgos.
www.ubu.es
- Universidad Rovira y Virgili de Tarragona.
www.urv.es
- Universidad de Alcalá de Henares.
www.uah.es
- Universidad de Zaragoza.
www.unizar.es

Sponsor Entities:

- Junta de Castilla y León.
- Diputación Provincial de Burgos.
- Burgos City Council.



Burgos geographical location:



Burgos has a good geographical location, can be reached by bus, train or by plane.



Nearby airports:

Madrid-Barajas:	245 km
Bilbao-Sondica:	145 km
Vitoria-Foronda:	144 km
Valladolid-Villanubla:	122 km
Barcelona:	550 km



Convention Centre:

The Human Evolution Complex occupies more than 100.000 square meters in the historic center of the city, housing the Research National Center, The Human Evolution Museum and the Convention Centre and exhibitions.

The new Convention Centre and exhibitions will be inaugurated in 2012. It counts with 35,000 square meters spread in five floors, which is well illuminated and it is provided of equipment with the most advanced technological means.

The Convention Centre is built by the famous architect Juan Navarro Baldewerg.



Human Evolution Museum, Convention Centre and Auditorium:

Auditorium:

Capacity: 1.400 people
 Capacity: 500 people
 Installation: Audio and video
 Simultaneous Translation
 Reception Hall: yes
 Allow any additional installation.
 Complementary Rooms

Multipurpose rooms:

Space: two rooms of 310m² each.
 Simultaneous Translation
 Reception Hall: yes
 Allow any additional installation.
 Complementary Rooms

Exhibition place:

3.700 m²

Eating place:

Capacity: 1.500 people



Burgos hotel offer:

The hotel offer has grown up in the last years with the opening of new hotels beating 7.000 hotel rooms.

Also Burgos offers a big number of caterers who work with high quality in very important events with experience, good service and good taking care of all details.

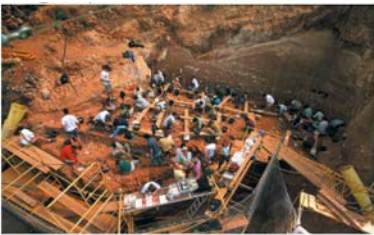
	hotels	rooms	beds
5*	1	42	81
4*	17	1.238	2.324
3*	49	1.775	3.011

Other categories: Más de 50 establecimientos entre hoteles de inferior categoría, hostales y pensiones





World heritage:



The human activity has left in Burgos a deep impression. If the page more outstanding of the past and the archeology can be found in Sierra de Atapuerca Sites, also have value rock art sanctuaries Ojo Guareñam, dolmen set Las Loras, Iron Age necropolis, roman city Clunia all located in the Sierra de la Demanda.

Near by can be visited: Orce Sites (Granada), Altamira Caves (Cantabria).



Atapuerca Foundation:

The Atapuerca Foundation was born thanks to a Research programme: The **Atapuerca Project**.

The need for a foundation to support and publicize the project emerged when the Sierra de Atapuerca sites began to gain scientific and social importance.



Atapuerca Foundation Headquarters
(Ibeas de Juarros, Burgos)



Future Visits Management Centre
(Atapuerca, Burgos)



The Atapuerca Foundation:

The Atapuerca Foundation is a non-profit body formed in Burgos Spain on 26th of July 1999. Its aims are to support the research project underway at The Sierra de Atapuerca sites and disseminate information about the discoveries and human evolution, serving as an active link between the Atapuerca Research Team (EIA) and social agents. The Atapuerca Foundation headquarters are in Ibeas de Juarros, a village just 2 km from the site and 12 km from Burgos. It was officially opened on the 7th of July 2009 by Her Majesty Queen Sofía. Its labor to help for training new PhD Postgraduate, counts with a large number of institutions, and it comes channeling through Atapuerca Chair, constituted the 29th of November of 1999 with the SSMM. Kings of Spain.

The Atapuerca Foundation with twelve years of work, is placed on the list of the world's most important scientific and cultural institutions in its area. The Atapuerca Foundation board of patrons is made of several public and private bodies which participate in the programmes actively.

The Atapuerca Foundation has as Chairs the representatives of Caja de Burgos and Diario de Burgos, and the post of Deputy Chair is held jointly by **Juan Luis Arsuaga, José María Bermúdez de Castro y Eudald Carbonell**, the three Co-directors of the Atapuerca Scientific Project.



Objectives:

The objectives of Atapuerca Foundation are:

- 1.- Dissemination of the research linked to the sites of Sierra de Atapuerca, and in general the research related to Human Evolution.
- 2.- To let know the Sierra de Atapuerca Sites, spread the results of the research around these Sites, and in general divulge the Human Evolution studies.
- 3.- Promote the internationalization of the Atapuerca Project, and the studies about Human Evolution.
- 4.- Contribute actively with the sustainable development regarding geographical environment of Sierra de Atapuerca Sites, as a model to develop based in the Cultural Heritage.



The Sierra de Atapuerca sites:

The Sierra de Atapuerca sites are in Burgos province, straddling two municipalities, Ibeas de Juarros and Atapuerca, just 15 km from Burgos city (Spain).

It is one of the world's largest archeo-palaeontological complexes on account of the importance and the uniqueness of the discoveries, and the concentration of more than 1.5 million years of human evolution in Euroasia into an area covering barely 12 square kilometers.

Sierra de Atapuerca contains unique remains in the world's fossil record: a new human species (*Homo antecessor*), over 90% of the known remains of the world *Homo heidelbergensis*. The Sierra contains Euroasia's oldest known human remains.

It has big support of its multidiscipline research team which contributes with a large number of publications.



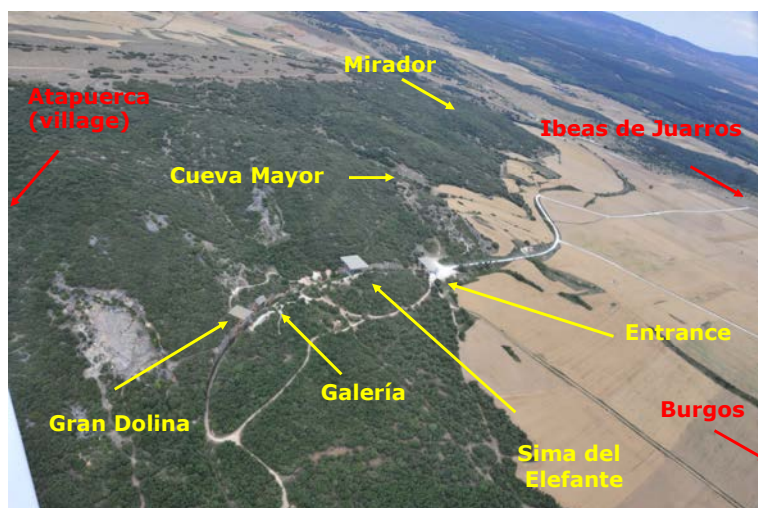
The Atapuerca Research Team (EIA):



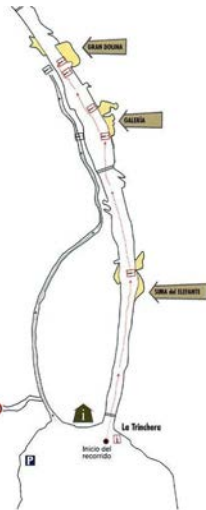
The Atapuerca Research Team (EIA) is composed of more than 150 people, the majority graduated and PhD postgraduate. The EIA is specialized in over 20 different disciplines spanning archaeology, biology, paleontology, palynology, medicine, geology, photography, odontology... The Team includes members from many different Universities and research centers, in Spain and abroad.



Sites' situation of Sierra de Atapuerca:



The Railway Cutting Sites' map:



Sima del Elefante

Entrance



Galería

Gran Dolina



Dissemination:

The Atapuerca Foundation conducts a wide range of dissemination and scientific communication activities in the form of national and international-scale projects, with the objective in focus on reaching out to all sectors of society, from scientists to the rural inhabitants of Sierra de Atapuerca Area.

The Atapuerca Foundation is working hand in hand with a large number of local, regional, national and international institutions to disseminate all concerned Sierra de Atapuerca Sites.



Internationalization:

In the coming years, The Atapuerca Foundation will start a new growth and internationalization process as part of one of the Foundation's objectives: to ensure that we become a worldwide reference point in this field.

The Foundation took the first step towards the fulfillment of this goal with the Cervantes Institute in 2004. This fruitful collaboration is enabling the Atapuerca Project to spread out all points of the Globe under the auspices of the Cervantes Institute's 70 centers.



"Sistema de Atapuerca: culture of Evolution"

The "**Sistema Atapuerca**" is an administrative structure which depends of Cultur Department of the Regional Government of Castilla y León.

The Atapuerca Foundation has the condition to be an associated Center to "Sistema Atapuerca", and has under its charge, from the two Reception Centers in Ibeas de Juarros and Atapuerca, the management of the visits of Sierra de Atapuerca sites and the Archeological Park.

The "Sistema Atapuerca" consists of:

- Museum of Human Evolution (Burgos). It is set in the "Evolution Complex", that includes this Museum, the headquarters of Research National Center of Human Evolution, y el Palacio de Congresos in Burgos.
- Visits Reception Center in Ibeas de Juarros. Shortly headquarters of Atapuerca Foundation.
- Visits Reception Center of Atapuerca. Near of the management Visits Center of Atapuerca Foundation.
- Atapuerca archeological Park. Near of the management Visits Center of Atapuerca Foundation.



“Sistema Atapuerca: culture of Evolution”



Museum of Human Evolution, in the Evolution Complex, Burgos



“Sistema Atapuerca: culture of Evolution”



Ibeas de Juarros Visits Reception Center



“Sistema Atapuerca: culture of Evolution”



Atapuerca Visits Reception Center



Atapuerca Archeological Park:



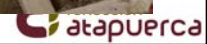
SOME SITES WHERE WE WORK



LA BOELLA, TARRAGONA (SPAIN)



Fotos: Jordi
Mestre (IPHES)



VILAFAMÉS, CASTELLÓ DE LA PLANA (SPAIN)

Fotos: Jordi
Mestre (IPHES)



fundación
atapuerca



Fotos: Jordi
Mestre (IPHES)



ORCE, GRANADA (SPAIN)

fundación
atapuerca



Fotos: Jordi
Mestre (IPHES)



ABRIC ROMANÍ, BARCELONA (SPAIN)



PINILLA DEL VALLE, MADRID (SPAIN)

Fotos:
JMBDC (CENIEH)
Enrique Baquedano
(MARQ)





**AÏN BENI
MATHAR**



**AÏN
HANESCH**

(ALGERIA)

Fotos: Jordi
Mestre (IPHES)



**SANTIAGO
CHAZUMBA,
OAXACA
(MEXICO)**

Fotos: Jordi
Mestre (IPHES)



ATAPUERCA SITES



Sima del Elefante: TE



Galería: TG
Covacha Zarpazos: TZ



Gran Dolina: TD



Sima de los Huesos



Valle de las Orquídeas



Cueva del Mirador

Fotos:
JMBDC
(CENIEH)
Jordi Mestre
(IPHES)
Javier
Trueba

WORLD HERITAGE: 30 November 2010

